

LAKE WASHINGTON
SCHOOL DISTRICT
NO. 414

BEN FRANKLIN
ELEMENTARY
SCHOOL

12434 NE 60th
Street
Kirkland, WA
98033

M A H L U M
architects



| | |
|---|---|
| 71 Columbia SUITE 400 Seattle, WA 98104 | 1231 NW Hoyt SUITE 102 Portland, OR 97209 |
| 206 441.4151 441.0478 f | 206 224.4032 206 224.0918 f |

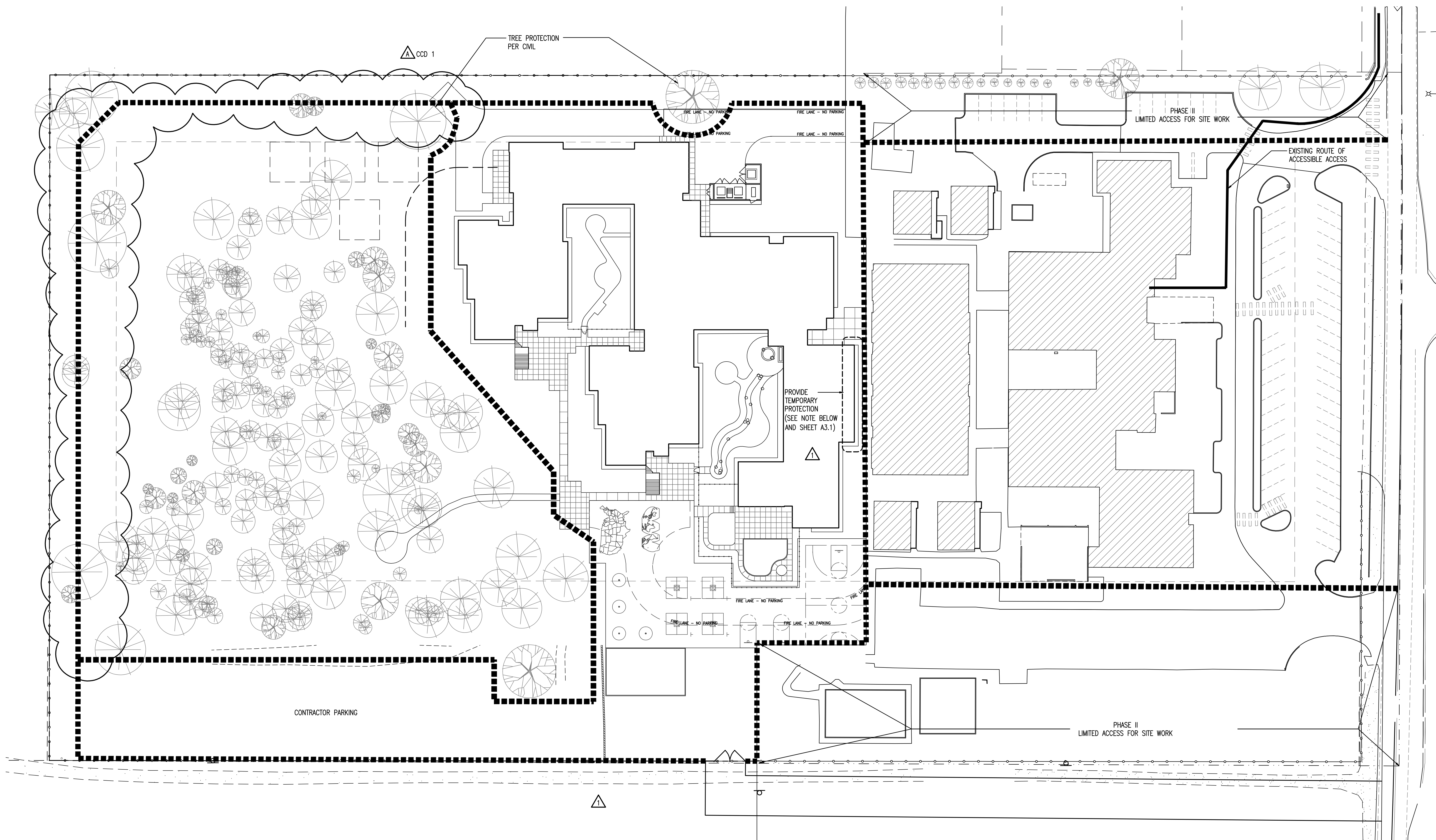
Project Number: 2002620.C
Date: 8 March 20
Drawn: MAK
Checked: MAK/GIR

BID DOCUMENTS
CONFORMED - 05/12
Revisions:
▲ ADDENDUM 1 -
▲ 03/21/04

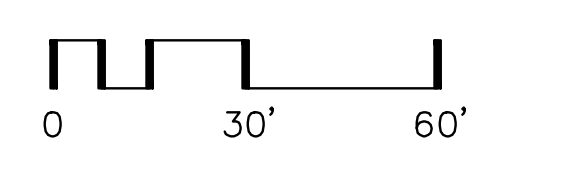
ARCHITECTURAL
SITE PLAN

PHASE I & II
CONSTRUCTION
ACTIVITIES

A1.0B



1 SITE PLAN
SCALE: 1" = 30.0'



LEGEND

| | |
|--|--|
| | TEMPORARY RATED CONSTRUCTION BARRIER SEE DET. 3/A1.0A |
| | LIMITS OF CONSTRUCTION SEE CIVIL DRAWINGS FOR FENCING REQUIREMENTS |

NOTE:
ALONG THE EXTENT OF NEW CONSTRUCTION CLOSER THAN 20'-0" TO THE EXISTING BUILDING:
1. OPENINGS BELOW 9'-0" ABOVE GRADE WILL BE PROTECTED BY TEMPORARY 5/8" TYPE X EXTERIOR GWB INSIDE AND OUTSIDE, WHEN THE NEW CONSTRUCTION EXTERIOR WALLS ARE SHEATHED AND THE FINAL WINDOW ASSEMBLIES ARE INSTALLED BUT PRIOR TO FINAL GLAZING.
2. THE OVERHANG OF THE NEW BUILDING WILL BE PROTECTED BY A TEMPORARY AUTOMATIC FIRE SUPPRESSION SYSTEM CAPABLE OF OPERATION IN EXTERIOR LOCATIONS.
3. THE TEMPORARY OPENING PROTECTION AND THE TEMPORARY FIRE SUPPRESSION SYSTEM MAY BE REMOVED UPON DEMOLITION OF EXISTING STRUCTURES CLOSER THAN 20'-0".

ZONING CODE COMPLIANCE

PARKING
EXISTING PARKING SPACES PROVIDED - 60
NEW PARKING SPACES PROVIDED
STAFF AND LONG TERM VISITORS 45
CURBSIDE SHORT TERM VISITORS 19
TOTAL 64
REFERENCE LANDSCAPE PLANS FOR LOCATION OF REQUIRED BUFFERS

CONSTRUCTION TYPE AND BUILDING OCCUPANCY TYPE
1997 UBC W/ WAC AMENDMENTS
TYPE II-1HR, SPRINKLERED FOR ONE HOUR CONSTRUCTION.
OCCUPANCY TYPE:
EDUCATIONAL DIV. 1