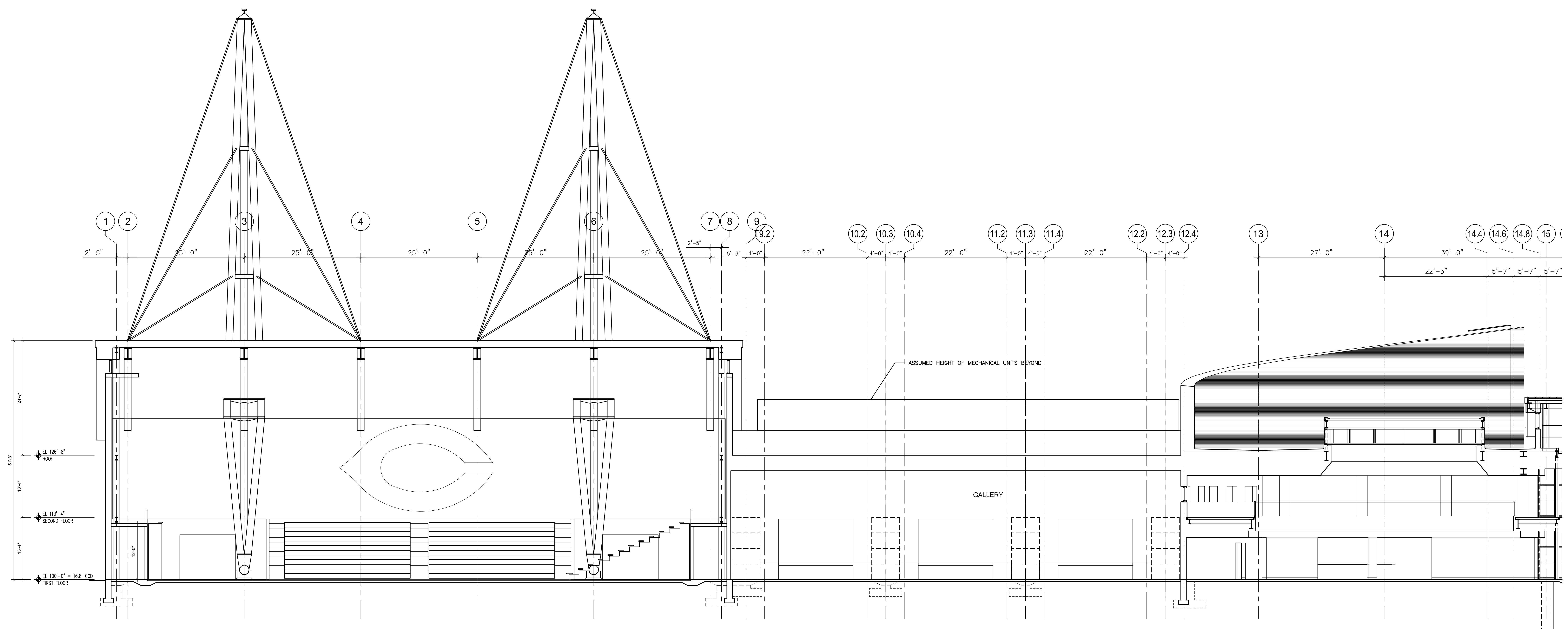
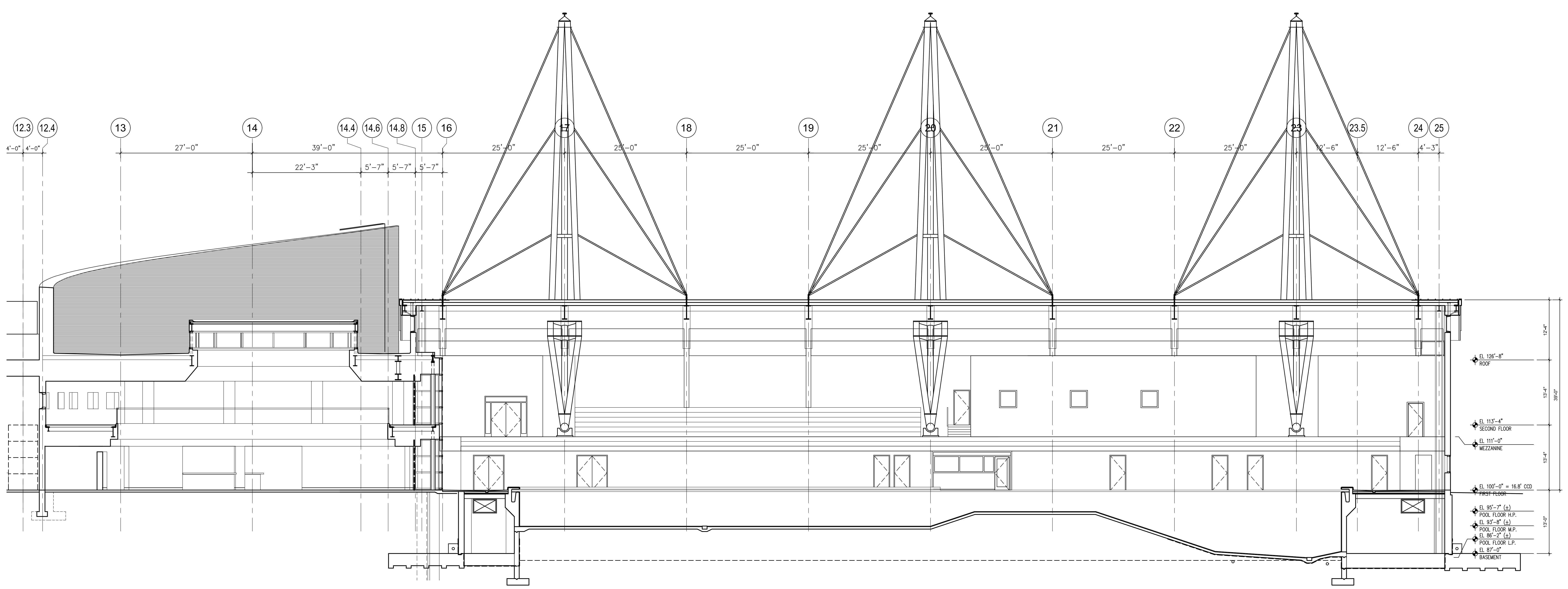


MATERIALS KEY

- ALUMINUM**
 AL-1 PAINTED COMPOSITE ALUMINUM PANEL
 AL-2 PAINTED COMPOSITE ALUMINUM COPING
 AL-3 PAINTED EXTRUDED STORMPROOF LOUVER
 AL-4 PAINTED ALUMINUM MULLION
- BRICK**
 BR-1 3 5/8" x 2 1/4" x 7 5/8" COLOR: GOLD
 BR-2 3 5/8" x 2 1/4" x 7 5/8" COLOR: RED
 BR-3 3 5/8" x 3 5/8" x 7 5/8" COLOR: BLACK
- GLASS**
 GL-1 1" CLEAR INSULATED VISION, LOW-E
 GL-2 1" CLEAR INSULATED VISION, LOW-E, TEMPERED INTERIOR PLY
 GL-3 1" CLEAR INSULATED VISION, LOW-E, TEMPERED INTERIOR PLY, FRITTED
 GL-4 1" CLEAR INSULATED VISION, LOW-E, FRITTED
 GL-5 1" CLEAR INSULATED VISION
 GL-6 1" CLEAR INSULATED VISION, TEMPERED
 GL-7 1/4" CLEAR WIRE
 GL-8 2/8" CLEAR WIRE, LAMINATED TO CLEAR
 GL-9 5/16" CLEAR, LAMINATED TO CLEAR
 GL-10 1/4" CLEAR
 GL-11 1/4" CLEAR, TEMPERED
- INSULATION**
 INS-1 PERIMETER - EXTRUDED POLYSTYRENE
 INS-2 CURVED ROOF - EXTRUDED POLYSTYRENE
 INS-3 PLAZA - EXTRUDED POLYSTYRENE
 INS-4 FLAT ROOF - INSULATED POLYISOCYANURATE
 INS-5 CAVITY - POLYISOCYANURATE W/ DRAIN BD.
 INS-6 FOS-FACED ROCK FIBER BOARD
 INS-7 FRESHING INSULATION
- WATERPROOFING**
 WP-1 SELF-HEALING COMPOSITE SHEET MEMBRANE, WITH PROTECTION BOARD
 WP-2 FLUID APPLIED MEMBRANE & PLAZA SYSTEM

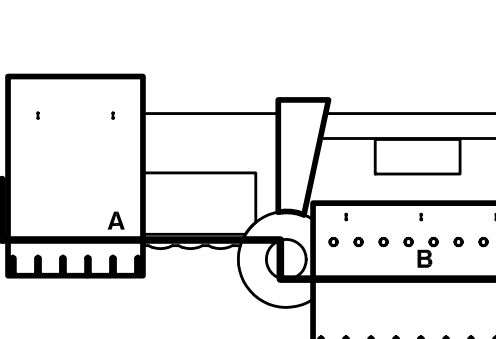


1 LONG SECTION - PART A
 1/8" = 1'-0"



2 LONG SECTION - PART B
 1/8" = 1'-0"

Mark	Description	Date
ISSUED FOR GMP		05/16/01
75% CONSTRUCTION DOCUMENTS		12/01/00
50% CONSTRUCTION DOCUMENTS		09/27/00
IN-PROGRESS EXT. WALL		08/11/00
100% DESIGN DEV		07/07/00
50% DESIGN DEV		05/08/00



Drawn	Checked	Approved	Project Number
			9146.25
			May 08, 2000
			1/8" = 1'-0"