

- The Rise Group**  
 Development Manager
- Walsh Construction**  
 Construction Manager
- Cesar Pelli & Associates, Inc.**  
 Design Architect
- OWP&P Architects, Inc.**  
 Architect and Structural Engineers of Record
- Bard, Rao + Athanas Consulting Engineers, Inc.**  
 MEP / PE Engineers
- Councilman/Hunsaker & Associates**  
 Pool Consultant
- Rubinos & Mesia Engineers, Inc.**  
 CH2 Engineer
- H.M. Brandston & Partners, Inc.**  
 Lighting Design
- Shiner + Associates, Inc.**  
 Acoustical Consultant

**MATERIALS KEY**

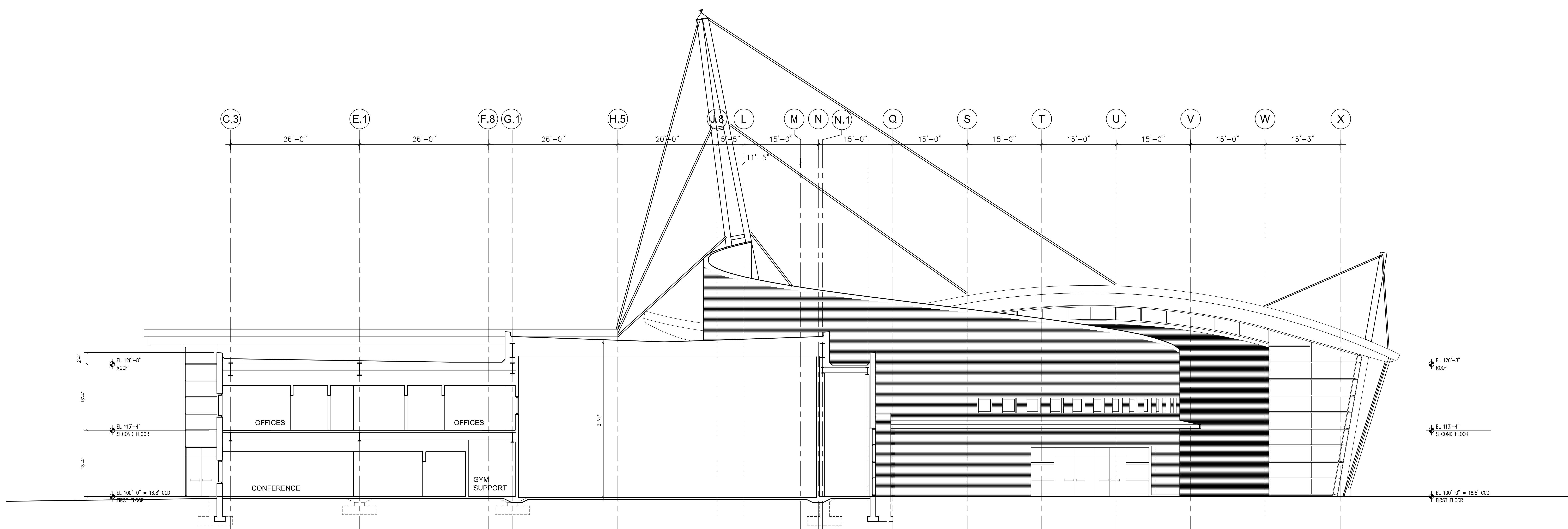
**ALUMINUM**  
 AL-1 PAINTED COMPOSITE ALUMINUM PANEL  
 AL-2 PAINTED COMPOSITE ALUMINUM COILING  
 AL-3 PAINTED EXTRUDED STORMPROOF LOUVER  
 AL-4 PAINTED ALUMINUM MULLION

**BRICK**  
 BR-1 3 5/8" x 2 1/4" x 7 5/8" COLOR: GOLD  
 BR-2 3 5/8" x 2 1/4" x 7 5/8" COLOR: RED  
 BR-3 3 5/8" x 3 5/8" x 7 5/8" COLOR: BLACK

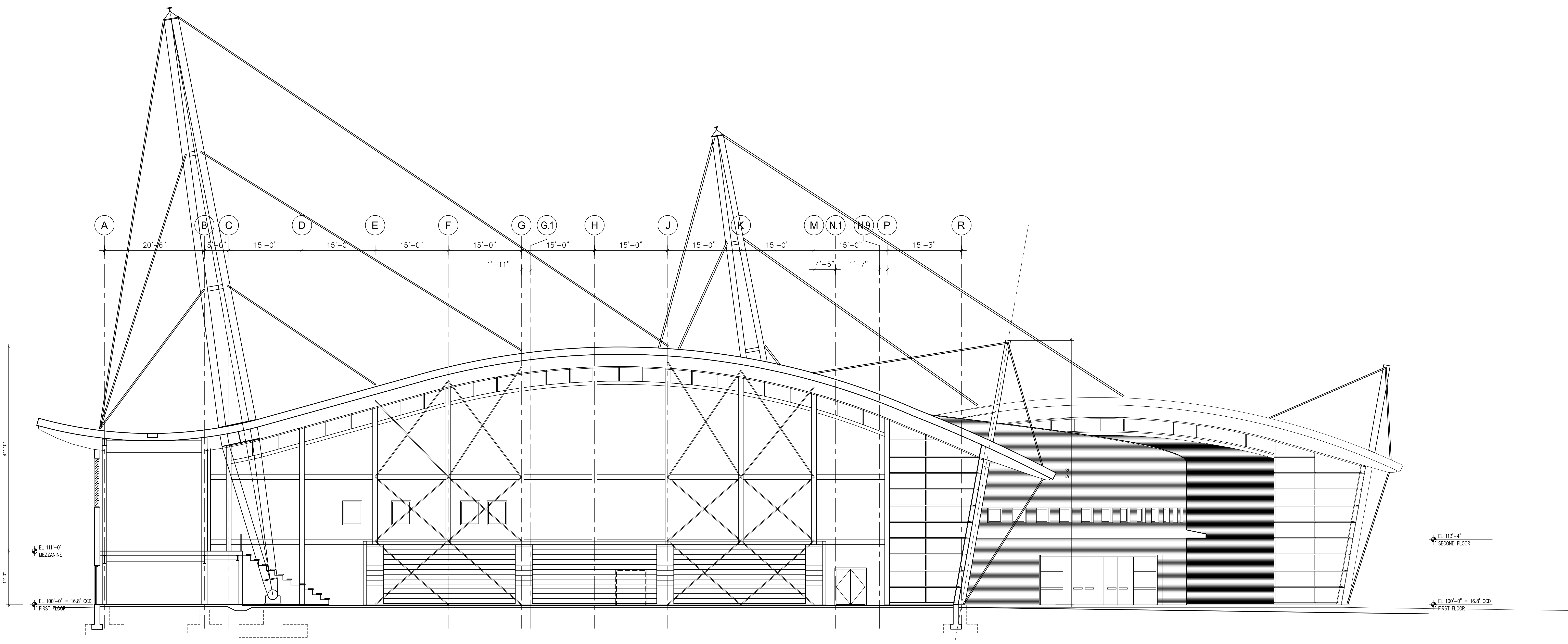
**GLASS**  
 GL-1 1" CLEAR INSULATED VISION, LOW-E  
 GL-2 1" CLEAR INSULATED VISION, LOW-E, TEMPERED INTERIOR PLY  
 GL-3 1" CLEAR INSULATED VISION, LOW-E, TEMPERED INTERIOR PLY, FRITTED  
 GL-4 1" CLEAR INSULATED VISION, LOW-E, FRITTED  
 GL-5 1" CLEAR INSULATED VISION, LOW-E  
 GL-6 1" CLEAR INSULATED VISION, TEMPERED  
 GL-7 1/4" CLEAR WIRE  
 GL-8 5/16" CLEAR WIRE, LAMINATED TO CLEAR  
 GL-9 5/16" CLEAR, LAMINATED TO CLEAR  
 GL-10 1/4" CLEAR  
 GL-11 1/4" CLEAR, TEMPERED

**INSULATION**  
 INS-1 PERIMETER - EXTRUDED POLYSTYRENE  
 INS-2 CURVED ROOF - EXTRUDED POLYSTYRENE  
 INS-3 PLAZA - EXTRUDED POLYSTYRENE  
 INS-4 FLAT ROOF - INSULATED POLYISOCYANURATE  
 INS-5 CAVITY - POLYISOCYANURATE W/ DRAIN BD.  
 INS-6 FOS-FACED ROOF FIBER BOARD  
 INS-7 FRESHAIR INSULATION

**WATERPROOFING**  
 WP-1 SELF-ADHERING COMPOSITE SHEET MEMBRANE, WITH PROTECTION BOARD  
 WP-2 FLUID APPLIED MEMBRANE & PLAZA SYSTEM



1 SECTION AT REC. GYM  
 1/8" = 1'-0"



2 SECTION AT COMP. GYM  
 1/8" = 1'-0"

ISSUED FOR GMP	05/18/01
75% CONSTRUCTION DOCUMENTS	12/01/00
50% CONSTRUCTION DOCUMENTS	09/27/00
IN-PROGRESS EXT. WALL	08/11/00
100% DESIGN DEV	07/07/00
50% DESIGN DEV	05/08/00
Mark	Description
Date	

Drawn	Checked	Approved	Project Number	Date	Scale	Title
			9146.25	May 08, 2000	1/8" = 1'-0"	SECTIONS AT COMP. AND REC GYMS