

The Rise Group
 Development Manager

Watsh Construction
 Construction Manager

Cesar Pelli & Associates, Inc.
 Design Architect

OWP&P Architects, Inc.
 Architect and Structural Engineers of Record

Bard, Rao + Athanas Consulting Engineers, Inc.
 MEP / PE Engineers

Counselman/Hunsaker & Associates
 Pool Consultant

Rubinos & Mesia Engineers, Inc.
 CM at Risk

H.M. Brandston & Partners, Inc.
 Lighting Design

Shiner + Associates, Inc.
 Acoustical Consultant

MATERIALS KEY

ALUMINUM

AL-1 PAINTED COMPOSITE ALUMINUM PANEL
 AL-2 PAINTED COMPOSITE ALUMINUM COILING
 AL-3 PAINTED EXTRUDED STORMPROOF LOUVER
 AL-4 PAINTED ALUMINUM MULLION

BRICK

BR-1 3 5/8" x 2 1/4" x 7 5/8" COLOR: GOLD
 BR-2 3 5/8" x 2 1/4" x 7 5/8" COLOR: RED
 BR-3 3 5/8" x 3 5/8" x 7 5/8" COLOR: BLACK

GLASS

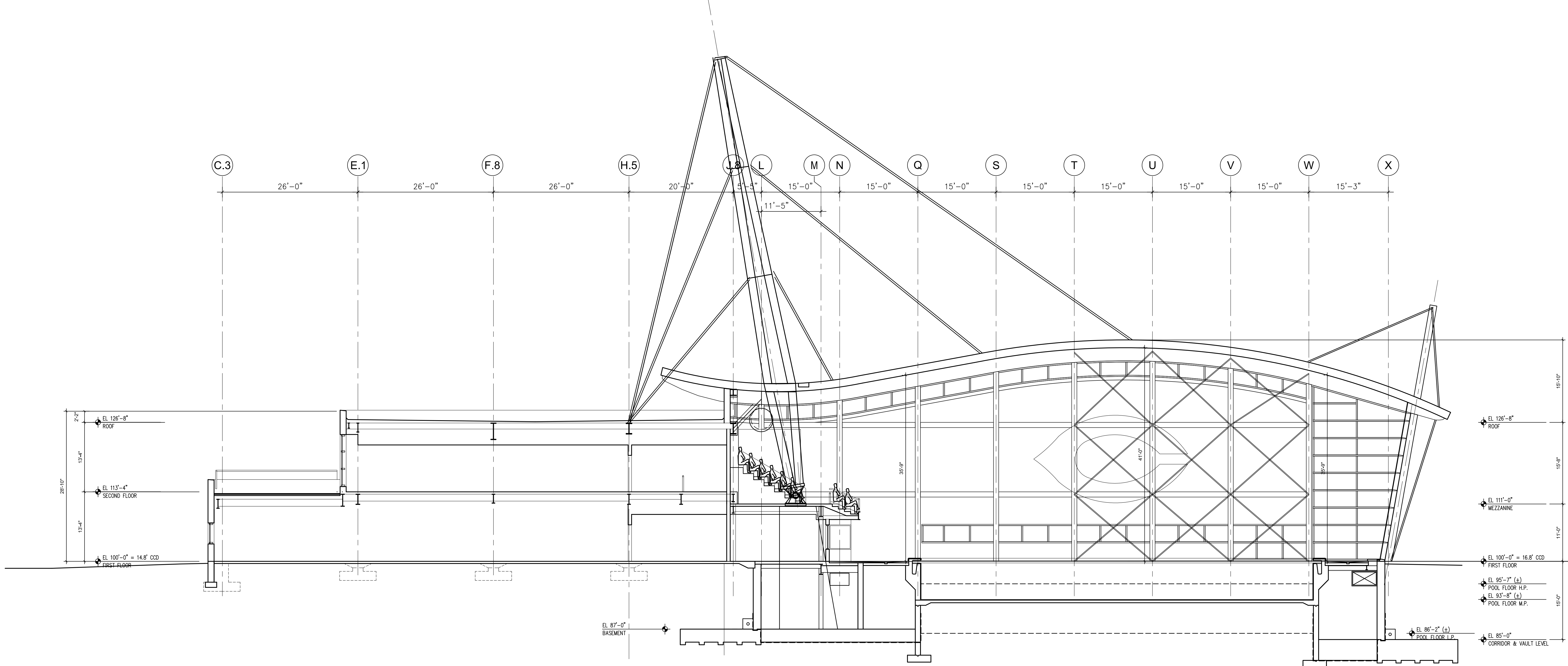
GL-1 1" CLEAR INSULATED VISION, LOW-E
 GL-2 1" CLEAR INSULATED VISION, LOW-E, TEMPERED INTERIOR PLY
 GL-3 1" CLEAR INSULATED VISION, LOW-E, TEMPERED INTERIOR PLY, FRITTED
 GL-4 1" CLEAR INSULATED VISION, LOW-E, FRITTED
 GL-5 1" CLEAR INSULATED VISION
 GL-6 1" CLEAR INSULATED VISION, TEMPERED
 GL-7 1/4" CLEAR WIRE
 GL-8 2/16" CLEAR WIRE, LAMINATED TO CLEAR
 GL-9 5/16" CLEAR, LAMINATED TO CLEAR
 GL-10 1/4" CLEAR
 GL-11 1/4" CLEAR, TEMPERED

INSULATION

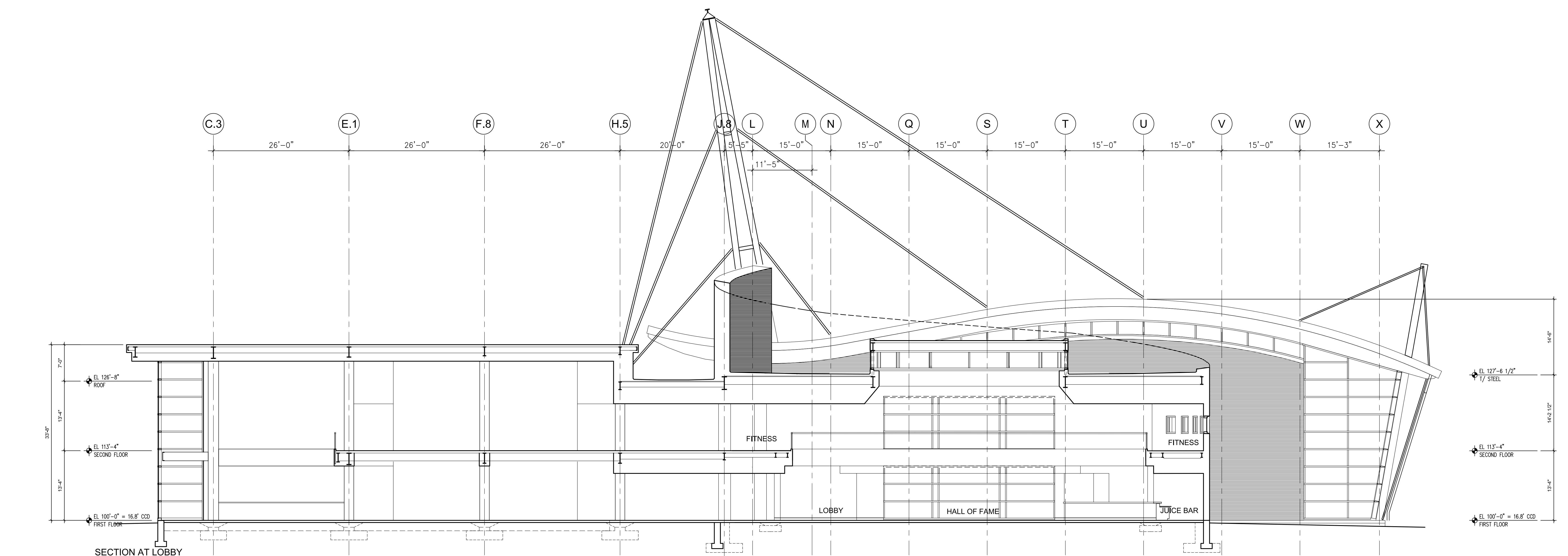
INS-1 PERIMETER - EXTRUDED POLYSTYRENE
 INS-2 CURVED ROOF - EXTRUDED POLYSTYRENE
 INS-3 PLAZA - EXTRUDED POLYSTYRENE
 INS-4 FLAT ROOF - INSULATED POLYISOCYANURATE
 INS-5 CAVITY - POLYISOCYANURATE W/ DRAIN BD.
 INS-6 FOS-FACED ROCK FIBER BOARD
 INS-7 FRESHING INSULATION

WATERPROOFING

WP-1 SELF-HEALING COMPOSITE SHEET MEMBRANE, WITH PROTECTION BOARD
 WP-2 FLUID APPLIED MEMBRANE & PLAZA SYSTEM



SECTION AT NATATORIUM
 1/8" = 1'-0"



SECTION AT LOBBY
 1/8" = 1'-0"

Mark	Description	Date
ISSUED FOR GMP		05/16/01
75% CONSTRUCTION DOCUMENTS		12/01/00
50% CONSTRUCTION DOCUMENTS		09/27/00
IN-PROGRESS EXT. WALL		08/11/00
100% DESIGN DEV		07/07/00
50% DESIGN DEV		05/08/00

Revisions

Mark	Description	Date
1		
2		

Drawn: _____
 Checked: _____
 Approved: _____
 Project Number: 9146.25
 Date: May 08, 2000
 Scale: 1/8" = 1'-0"
 Title: SECTIONS AT LOBBY AND POOL