

ARCHITECT
KIERANTIMBERLAKE ASSOCIATES LLP
 420 NORTH 20TH STREET
 PHILADELPHIA, PA 19130
 PHONE: 215-922-6600
 FAX: 215-922-4680
 EMAIL: kta@kierantimberlake.com

OWNER'S REPRESENTATIVE
JFW PROJECT MANAGEMENT
 17650 Club House Road Suite 203
 Montgomery Village, MD 20886
 PHONE: 301-330-3220
 FAX: 301-330-3487

STRUCTURAL ENGINEER
CVM ENGINEERS
 65 OLD ENGINE ROAD
 WAYNE, PA 19087
 PHONE: 610-989-3800
 FAX: 610-989-3677

MEP ENGINEER
BRUCE BROOKS & ASSOCIATES
 2209 Chestnut St
 Philadelphia, PA 19130
 PHONE: 215-569-0400
 FAX: 215-569-0664

LANDSCAPE ARCHITECT
ANDROPOGON ASSOCIATES, LTD
 10 SHIRLS LANE
 PHILADELPHIA, PA 19127
 PHONE: 215-484-0700
 FAX: 215-483-9200

CIVIL ENGINEER
VIKA, INC.
 8180 Greensboro Drive Suite 200
 McLean, VA 22102
 PHONE: 703-442-7800
 FAX: 703-761-2787

LIGHTING CONSULTANT
SEAN O'CONNOR ASSOCIATES
 211 NORTH 13TH STREET
 PHILADELPHIA, PA 19107
 PHONE: 215-988-9200
 FAX: 215-988-9008

LIGHTING CONSULTANT
BENYA LIGHTING DESIGN
 17937 SW MCEWAN AVENUE, SUITE 2208
 TIGARD, OR 97224
 PHONE: 503-718-5483
 FAX: 503-718-5485

WASTEWATER CONSULTANT
NATURAL SYSTEMS INTERNATIONAL
 3400 CERRILLOS ROAD, SUITE 1102
 SANTE FE, NM 87507
 PHONE: 505-986-7453
 FAX: 505-986-3720



SIDWELL FRIENDS SCHOOL
 BETHESDA, MARYLAND
 WASHINGTON, DC

MIDDLE SCHOOL

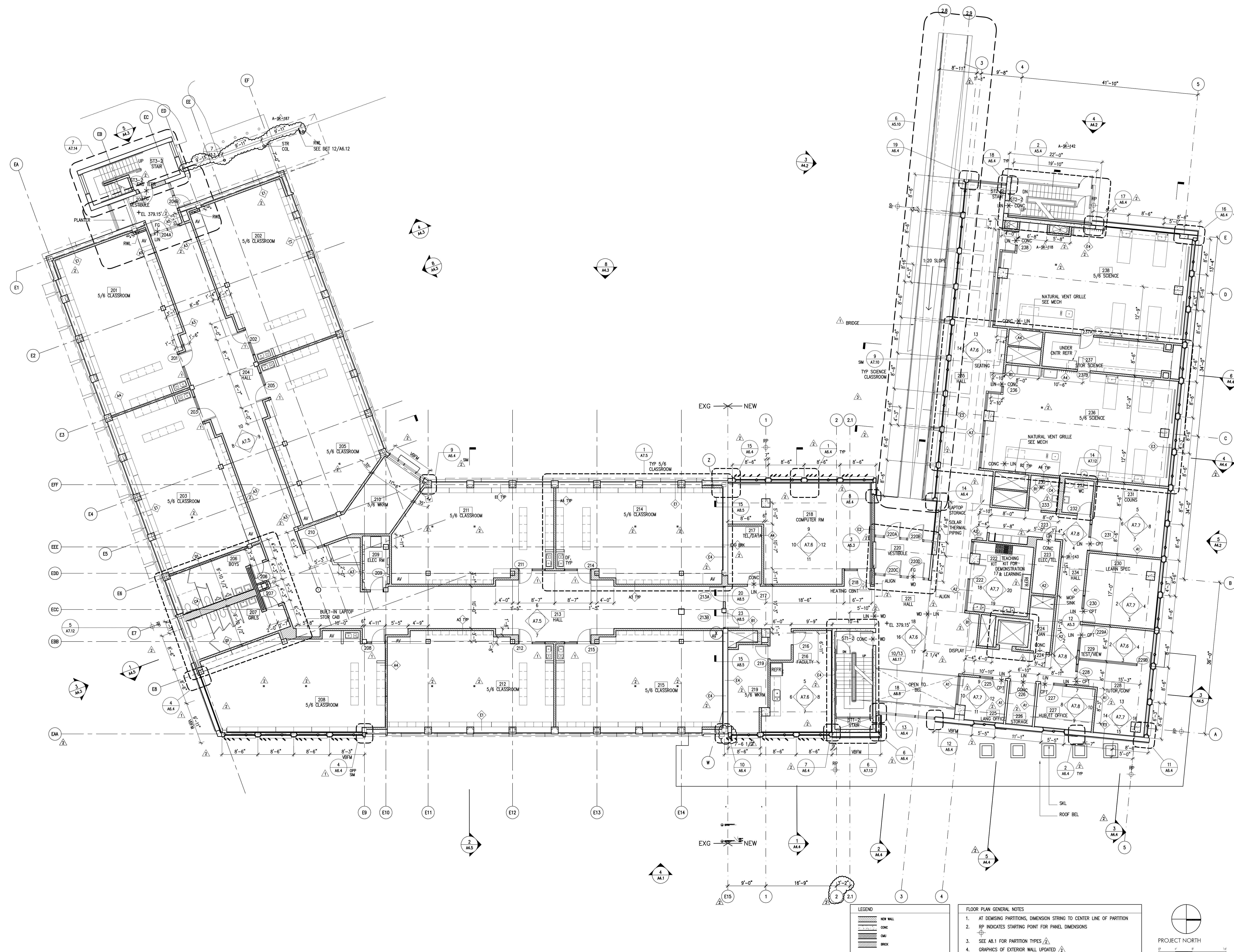
KTA PROJECT NO. 694

LEVEL 2 FLOOR PLAN

SCALE: 1/8" = 1'-0"
 DRAWN BY: PW, CB
 CHECKED BY: SR, AF
 CAD FILE: 694_A2.2.dwg
 DATE: 01 JUNE 2007

REVISIONS	DATE	DESCRIPTION
1	18 AUG 05	RFP#2
1	29 AUG 05	RFP#2A
2	30 AUG 05	RFP#5A
2	30 AUG 05	RFP#6
2	07 SEP 05	RFP#7
2	14 SEP 05	ASFP REVISED
2	05 OCT 05	PROJ. BID REL. 1-76 INCORP.
	05 OCT 05	ISSUED FOR CONSTRUCTION

A2.2
 RECORD SET

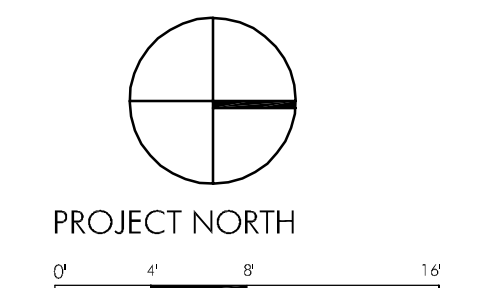


LEGEND

- NEW WALL
- CONC.
- DM
- BRCK

FLOOR PLAN GENERAL NOTES

- AT DIMENSING PARTITIONS, DIMENSION STRING TO CENTER LINE OF PARTITION
- RP INDICATES STARTING POINT FOR PANEL DIMENSIONS
- SEE A8.1 FOR PARTITION TYPES
- GRAPHICS OF EXTERIOR WALL UPDATED



1 LEVEL 2 FLOOR PLAN
 1/8" = 1'-0"