

ARCHITECT  
**KVA**  
 420 NORTH 20TH STREET  
 PHILADELPHIA, PA 19130  
 PHONE: 215-922-6600  
 FAX: 215-922-4680  
 EMAIL: kva@kvaarchitect.com

OWNER REPRESENTATIVE  
**JFW PROJECT MANAGEMENT**  
 19650 Club House Road Suite 203  
 Montgomery Village, MD 20886  
 PHONE: 301-330-3220  
 FAX: 301-330-3487

STRUCTURAL ENGINEER  
**CVM ENGINEERS**  
 85 OLD EAGLE SCHOOL ROAD  
 WAYNE, PA 19087  
 PHONE: 610-989-3800  
 FAX: 610-989-3677

MEP ENGINEER  
**BRUCE BROOKS & ASSOCIATES**  
 2209 Chestnut St.  
 Philadelphia, PA 19130  
 PHONE: 215-569-0400  
 FAX: 215-569-2664

LANDSCAPE ARCHITECT  
**ANDROPOGON ASSOCIATES, LTD**  
 10 SHURS LANE  
 PHILADELPHIA, PA 19127  
 PHONE: 215-487-0700  
 FAX: 215-483-7520  
 EMAIL: administration@andropogon.com

CIVIL ENGINEER  
**VKA, INC.**  
 8183 Greenbriar Drive Suite 200  
 McLean, VA 22102  
 PHONE: 703-442-7800  
 FAX: 703-761-2787

LIGHTING CONSULTANT  
**SEAN O'CONNOR ASSOCIATES**  
 211 NORTH 13TH STREET  
 PHILADELPHIA, PA 19107  
 PHONE: 215-988-9200  
 FAX: 215-988-9008

LIGHTING CONSULTANT  
**BENYA LIGHTING DESIGN**  
 17537 WYMEADAW AVENUE, SUITE 220B  
 TIGARD, OR 97224  
 PHONE: 503-718-5483  
 FAX: 503-718-5485

WASTEWATER CONSULTANT  
**NATURAL SYSTEMS INTERNATIONAL**  
 3600 CERRILLOS ROAD, SUITE 1102  
 SANTE FE, NM 87507  
 PHONE: 505-988-7453  
 FAX: 505-988-3720



**SIDWELL FRIENDS SCHOOL**  
 BETHESDA, MARYLAND  
 WASHINGTON, DC

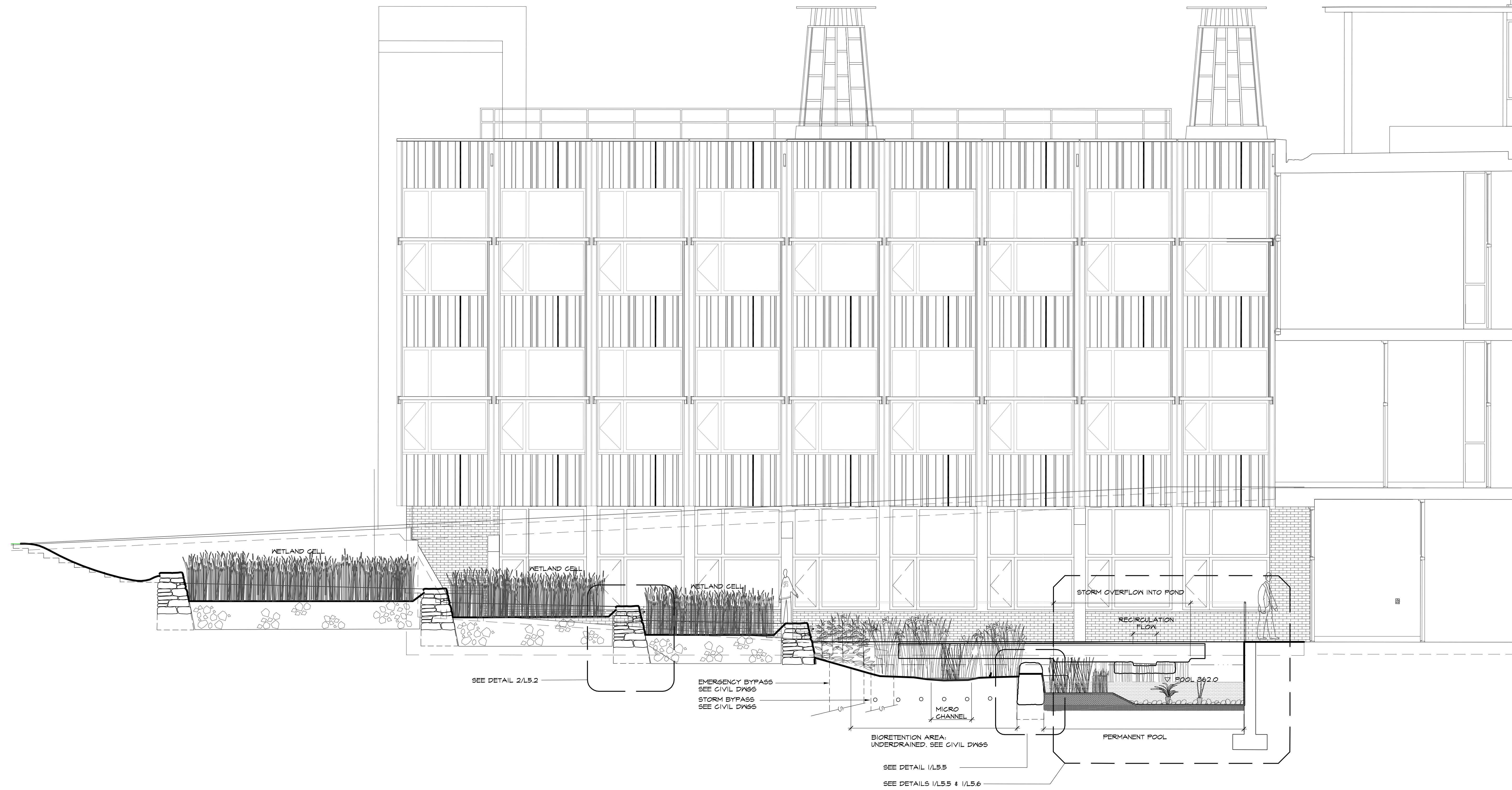
**MIDDLE SCHOOL**

KTA PROJECT NO. 694

**SECTION**  
**SECTIONS**

SCALE: 1/4"=1'-0"  
 DRAWN BY: LM, JD, SPS  
 CHECKED BY: JA, MT  
 CAD FILE: 27386LEV.MS.DWG  
 DATE: 1 FEBRUARY 2005

NO.	DATE	DESCRIPTION
1	15 JULY 05	ADDENDA 1-6, P-B RFI 1-24 INCORP



SECTION THROUGH WETLAND TERRACES AND BIOLOGY POND  
 L4.1 1/4"=1'-0"

27386LEV-MS.DWG